

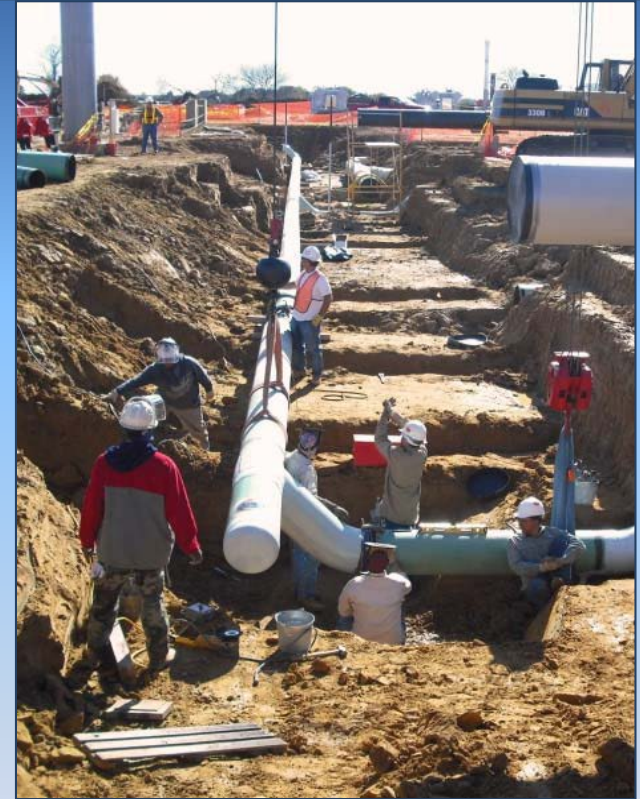


PRICE · GREGORY

A QUANTA SERVICES COMPANY



Conventional Pipeline



Station Work

**PIPELINE SYSTEM CONSTRUCTION
SERVICES**



PRICE · GREGORY

A QUANTA SERVICES COMPANY



ABOUT US

- **SIZE** – Largest pipeline contractor in North America, we have unmatched resources.
- **FINANCIAL STRENGTH** – Being owned by Quanta Services Corp. (PWR, a publically held company listed on the NYSE), PGI has access to large amounts of capital, allowing us to handle projects of any scale.
- **EXPERIENCE** – Being formed through the merger of H. C. Price Company and Gregory & Cook Construction, Inc., our history began during the 1920's.



PRICE · GREGORY

A QUANTA SERVICES COMPANY

WHY PRICE GREGORY ?



- Ten pipeline spreads that can locate wherever needed
- Local, national and international expertise in pipeline and heavy industrial construction
- Houston (headquarters)/Alaska regional office / Canadian Sister Company, O J Pipelines based on Nisku, Alberta
- Personal and professional attention to developing and completing projects safely and timely
- Willing to finance / Enter into partnerships / Develop turnkey projects
- Work in any location, any environment, anytime



PRICE · GREGORY

A QUANTA SERVICES COMPANY

SAMPLE OF COMPLETED PROJECTS



Client	Project Name	State	End Date	Pipe Specifications	Length/Miles
TransCanada Pipelines Limited	Keystone Pipeline Project-Spread 9	Kansas, Nebraska	11/10	36"	107 Miles of 36"
TransCanada Pipelines Limited	Keystone Pipeline Project-Spread 11	Kansas, Oklahoma	11/10	36"	80.2 Miles of 36"
Florida Gas Transmission	Phase VIII Expansion-Spread 1, Loops 1 & 2	Alabama, Florida	12/10	42" & 36"	A portion of 25.5 Miles of 42", 124.1 Miles of 36"
Florida Gas Transmission	Phase VIII Expansion-Spread 1, Loops 3 & 4	Florida	01/11	42" & 36"	A portion of 25.5 Miles of 42", 124.1 Miles of 36"
Williams Energy Services	Sundance Trail Pipeline	Wyoming	10/10	30"	15.5 Miles of 30"
TransCanada Pipelines Limited	Bison Pipeline Project - Spread 3	Montana, North Dakota	12/10	30"	91 Miles of 30"
TransCanada Pipelines Limited	Bison Pipeline Project - Spread 4	North Dakota	12/10	30"	118 Miles of 30"
Florida Gas Transmission	Phase VIII, Turkey Point	Florida	3/10	24"	6.6 Miles of 24"
TranCanada Digups	TransCanada Digups	Kansas, Missouri	11/10	30"	4 Locations
Regency Intrastate Gas LP	Regency Haynesville Expansion Project	Louisiana	12/10	36" & 42"	134 Miles
TransCanada PipeLines Limited	Keystone Pipeline Project-Spread 4	South Dakota, Nebraska	12/09	30"	130 Miles
TransCanada PipeLines Limited	Keystone Pipeline Project-Spread 5	Nebraska, Kansas	12/09	30"	140 Miles
TransCanada PipeLines Limited	Keystone Pipeline Project-Spread 6	Kansas, Missouri	12/09	30"	104.6 Miles
TransCanada PipeLines Limited	Keystone Pipeline Project-Spread 7	Missouri	12/09	30"	105.5 Miles
Rockies Express (Kinder Morgan)	REX East-Spread I	Ohio	02/10	N/A	Digups
Rockies Express (Kinder Morgan)	REX East-Spread G	Ohio	11/09	42"	52.9 Miles
Rockies Express (Kinder Morgan)	REX East-Spread K	Ohio	11/09	42"	30.2 Miles
Rockies Express (Kinder Morgan)	REX East-Spread F1	Indiana	04/09	42"	30 Miles
Rockies Express (Kinder Morgan)	REX East-Spread F2	Ohio	04/09	42"	40 Miles
Willbros Engineers, Inc.	Guardian Pipeline Expansion	Wisconsin	12/08	30" & 20"	79 Miles of 30", 26.5 Miles of 20"
Gulf Crossing Pipeline Co.	Gulf Crossing Expansion-Spread 1	Oklahoma, Texas	04/09	42"	65.4 Miles
TransWestern Pipeline Company	Phoenix Expansion	Arizona	01/09	42" & 36"	95 Miles of 42" and 40 Miles of 36"
TransWestern Pipeline Company	San Juan Expansion-Loops A & B	New Mexico	06/08	36"	25 Miles
Colorado Interstate Gas Company	High Plains Pipeline Project	Colorado	11/07	30" & 24"	84 Miles of 30" 82 Miles of 24"
Rockies Express/Kinder Morgan	REX East-Spread B	Illinois	03/09	42"	46.6 Miles
Rockies Express /Kinder Morgan	REX East-Spread C	Illinois	01/09	42" x 0.540 w.t. x-80	47 Miles of 42"
Gulf South Pipeline	Gulf Crossing Pipeline-Spreads 4 & 5	Louisiana	01/09	42" x 0.562" wt. X-70	91 Miles of 42"
Texas Gas	Fayetteville/Greenville Lateral-Spreads 1A & 5	Arkansas, Mississippi	01/09	36" x 0.400" wt, X-70	72.5 Miles of 36"
Michcon	Jamestown Expansion-Phase II	Michigan	06/08	30" x 0.375" wt, X-70	10 Miles of 30"
Gulf South Pipeline Company	South East Expansion-Spread 3	Mississippi, Alabama	04/08	42" x 0.562 w.t. x-70	35.5 Miles of 42"
Gulf South Pipeline Company	Mississippi Pipeline Expansion Project	Louisiana, Mississippi	02/08	42" x 0.562 w.t. x-70	62 Miles of 42"



PRICE · GREGORY

A QUANTA SERVICES COMPANY

MIDSTREAM / SHALE BASED PROJECTS



While PGI has large project experience, we also build smaller projects for our midstream and shale based clients. PGI is experienced with:

- Marginal sized projects,
- Urban construction techniques,
- Smaller diameter piping systems,
- Existing, in service operating systems,
- Re-testing, pipeline replacements, repairs and upgrades.



PRICE · GREGORY

A QUANTA SERVICES COMPANY

LARGE EQUIPMENT FLEET

